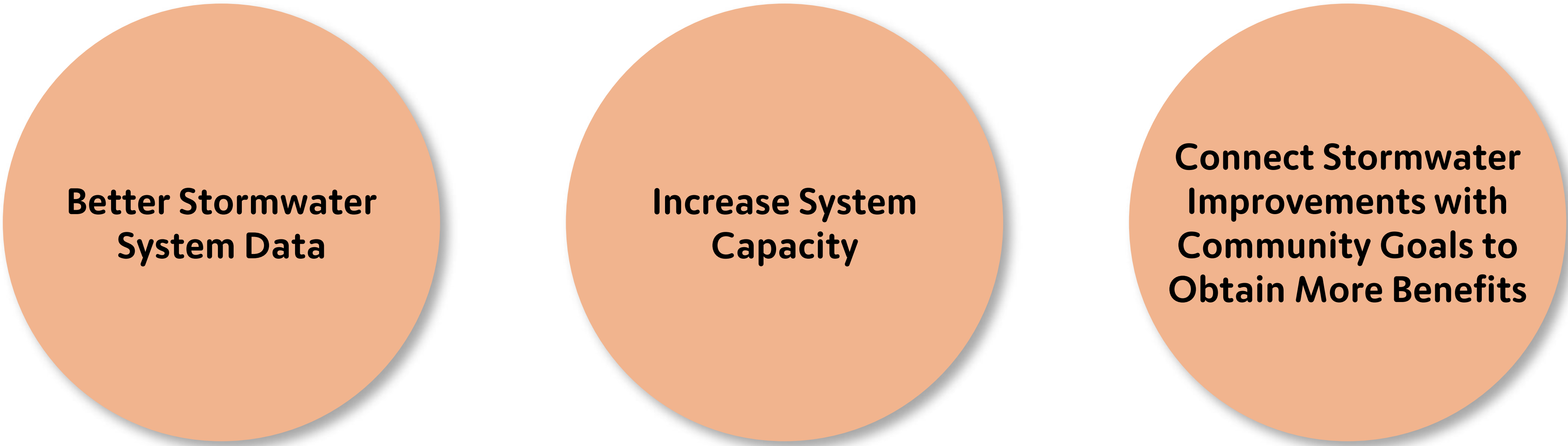


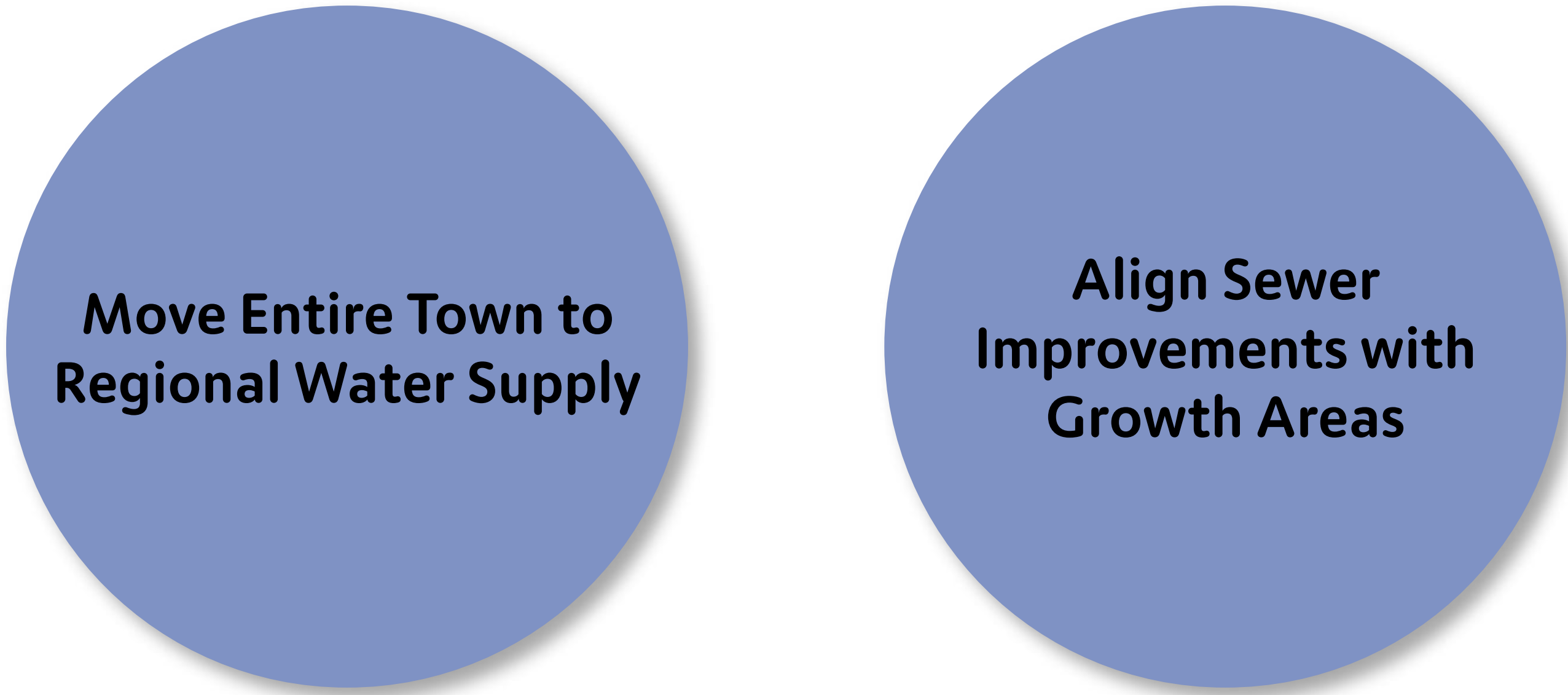
Community Needs Assessment | Stormwater, Water, & Sewer



STORMWATER NEEDS AT A GLANCE



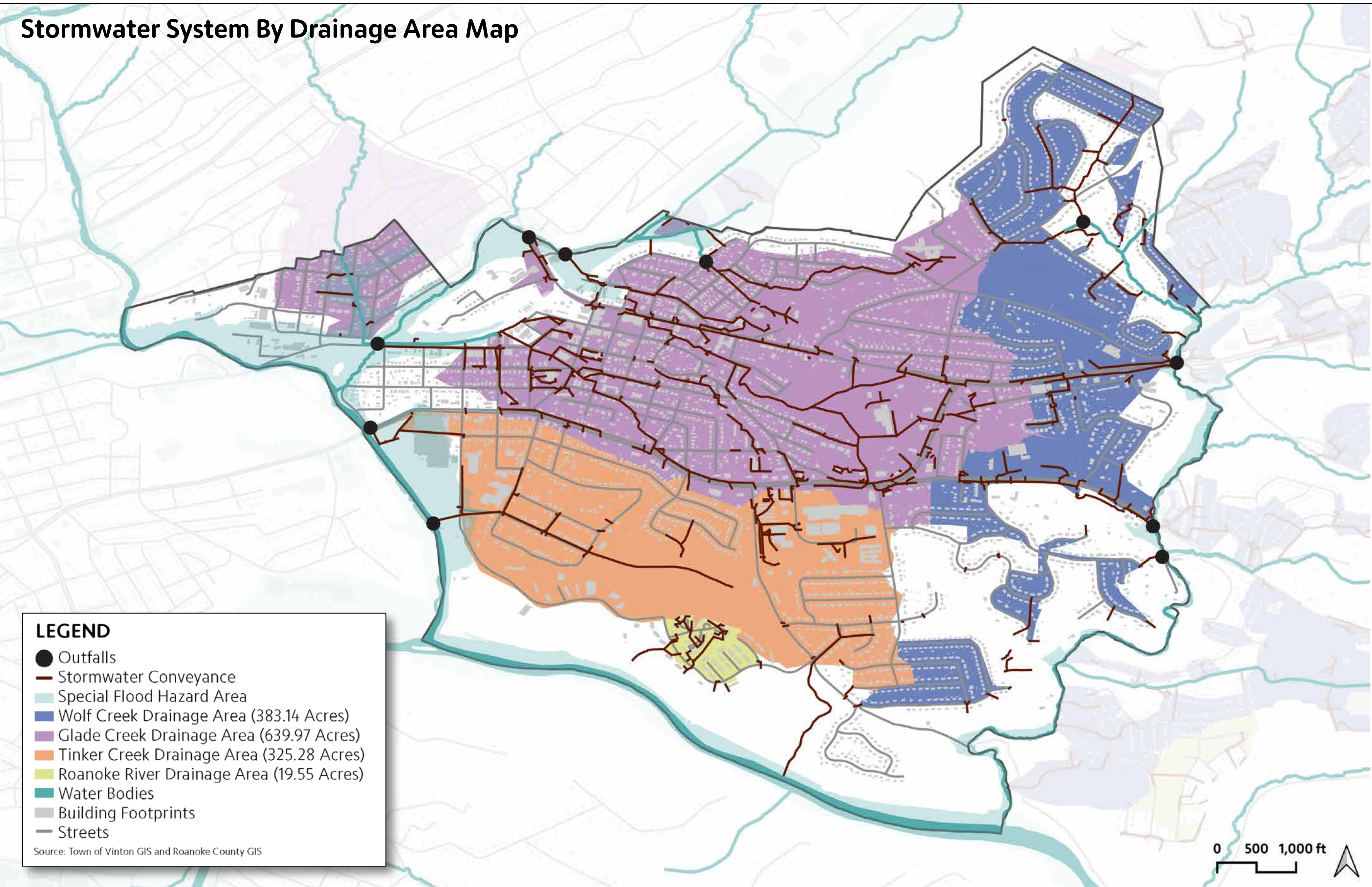
WATER & SEWER NEEDS AT A GLANCE



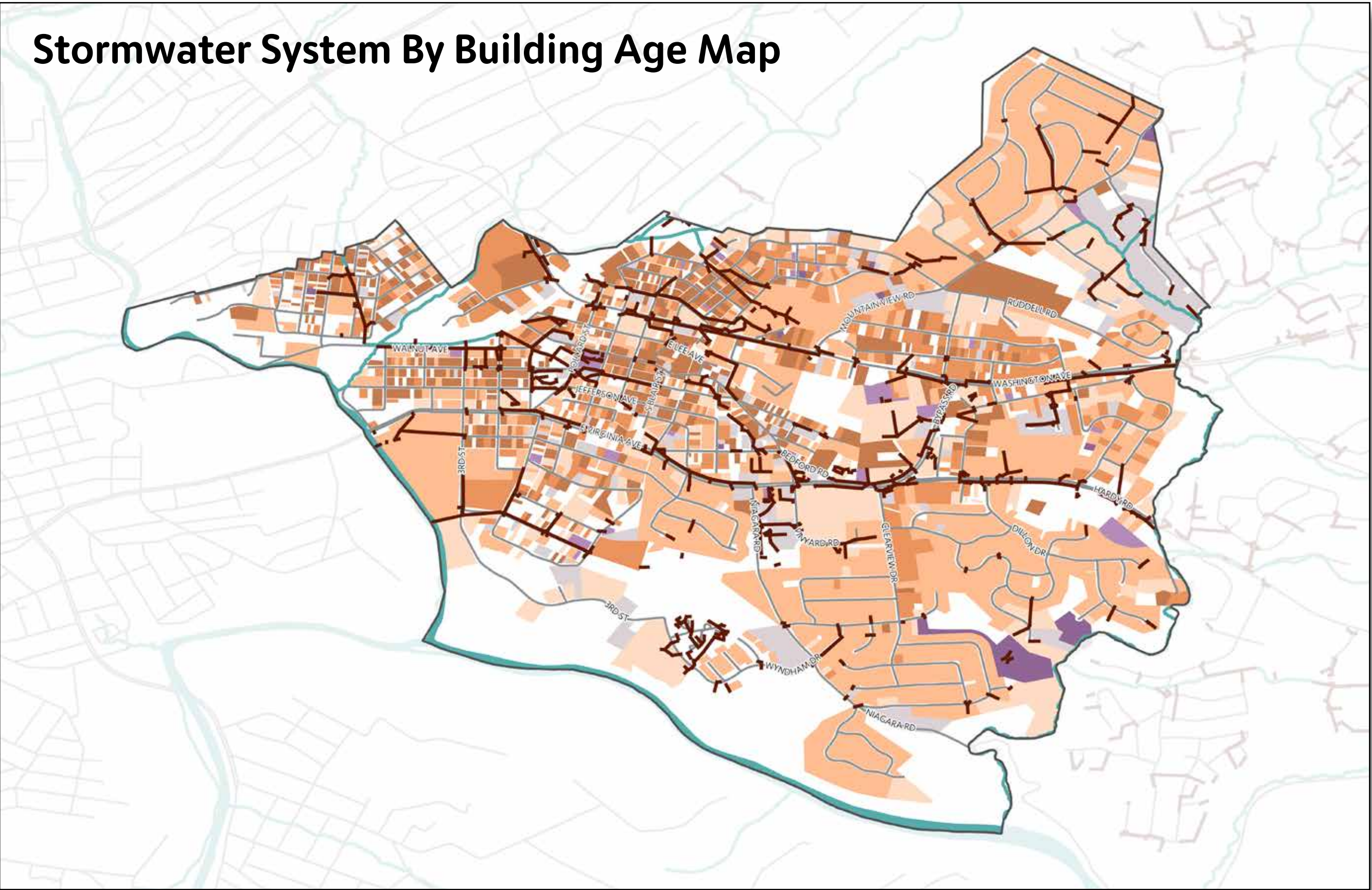
EXISTING CONDITIONS

More effective stormwater management is among the Town's greatest needs. The Roanoke Valley region is expected to face increasingly severe and frequent storms during the life of this Comprehensive Plan. Vinton's stormwater system is aging and not equipped to handle the increased demands from severe storms. Unlike stormwater, water and sewer service are now the responsibility of the Western Virginia Water Authority. Water pressure and quality are concerns in Vinton. Sewer service is available throughout the Town, but there are issues with aging pipes and stormwater intrusion of the sanitary sewer system.

Stormwater System By Drainage Area Map



Stormwater System By Building Age Map



Vinton's stormwater infrastructure needs to be upgraded. Most of the areas in need of repair fall within the Glade Creek watershed, which includes Downtown and older close-in neighborhoods.

